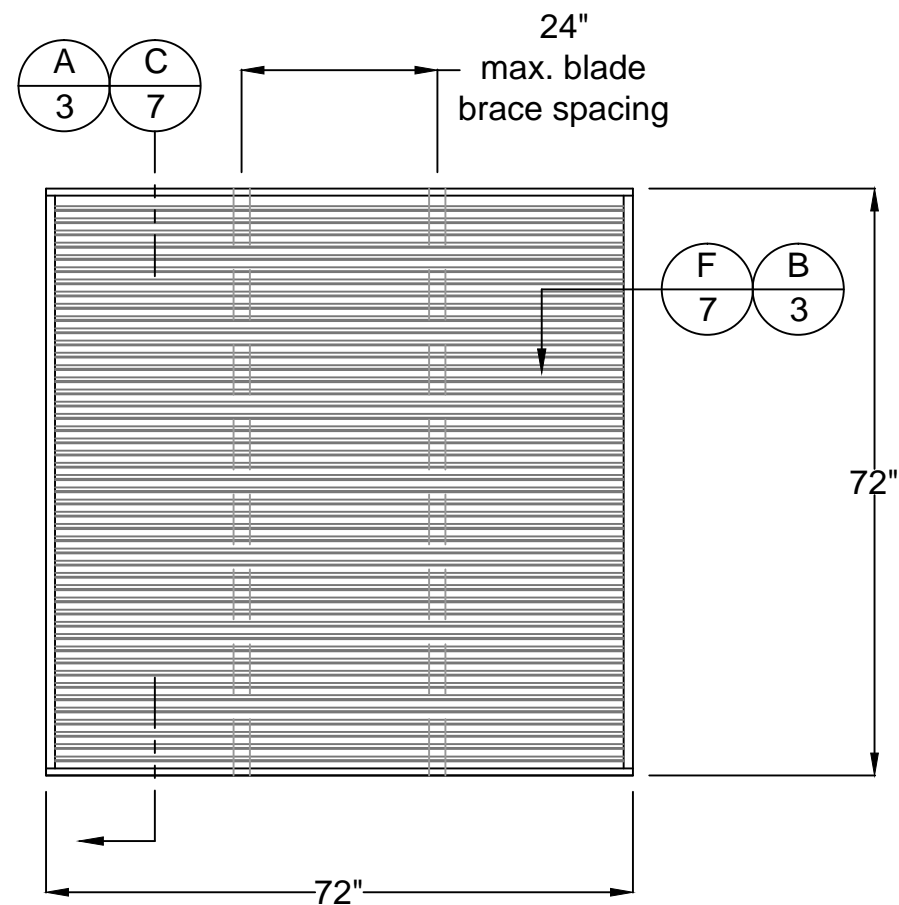


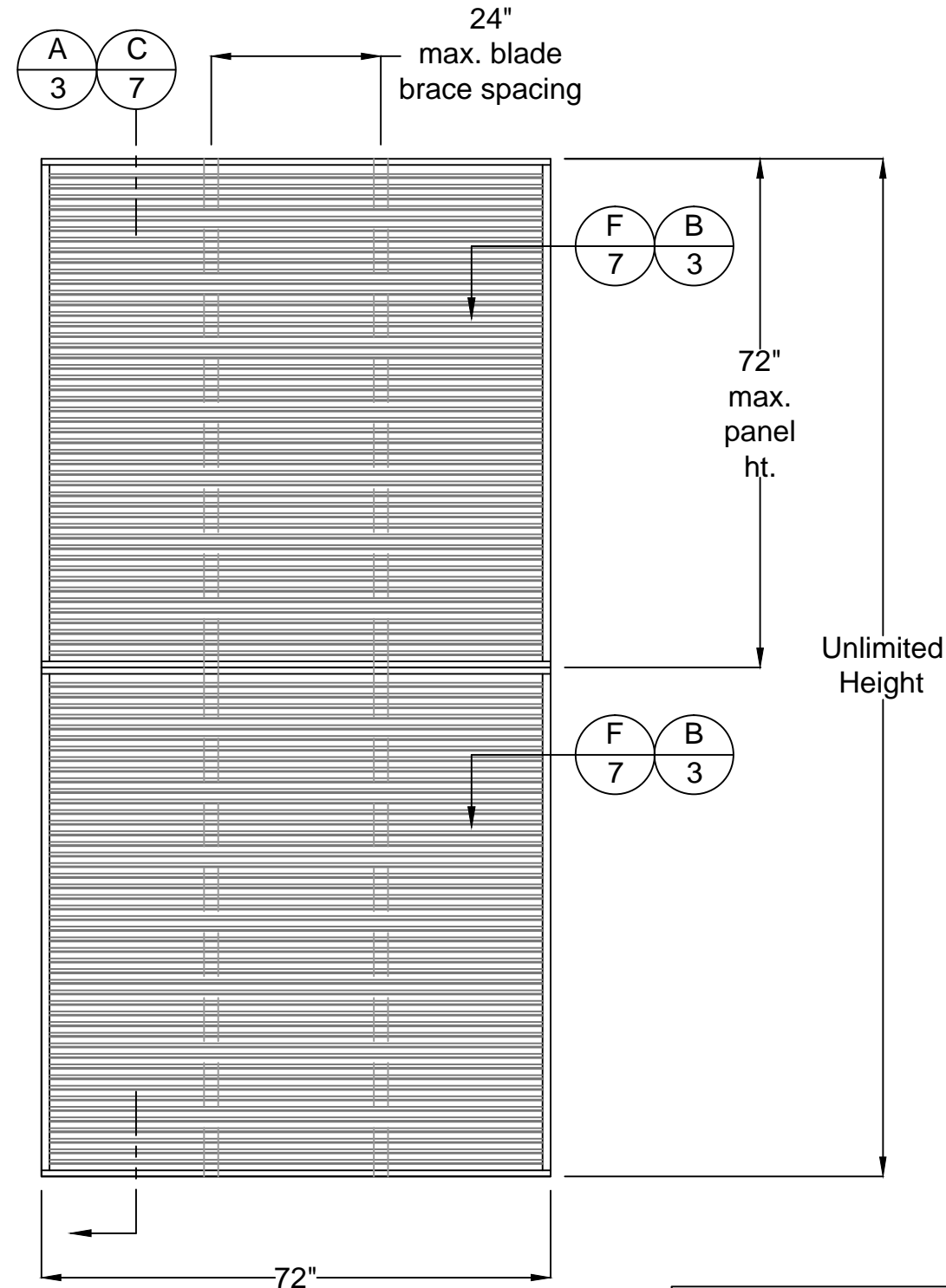
Model D-HV-6
 Design Load +/- 150 PSF)
 Test standards passed:
 ASTM E330
 AMCA 540 (missile level D)
 AMCA 550

GENERAL NOTES

1. THIS ALUMINUM WALL LOUVER PRODUCT IS LARGE MISSILE IMPACT RESISTANT IN ACCORDANCE WITH AMCA 540 AND DOES NOT REQUIRE THE USE OF SHUTTERS, AND COMPLIES WITH THE FLORIDA BUILDING CODE 6TH EDITION (2017) FOR USE OUTSIDE THE HIGH VELOCITY HURRICANE ZONE.
2. THIS LOUVER PRODUCT HAS BEEN TESTED FOR HIGH VELOCITY WIND DRIVEN RAIN RESISTANCE IN ACCORDANCE WITH AMCA 550.
3. THE STRUCTURAL ADEQUACY AND SUITABILITY OF THE WOOD BUCKS OR OTHER SUBSTRATES TO WHICH THE LOUVER SYSTEM IS TO BE INSTALLED SHALL BE VERIFIED BY A LICENSED ENGINEER OR REGISTERED ARCHITECT OR AS APPROVED BY THE AUTHORITY HAVING JURISDICTION.
4. AN ALLOWABLE STRESS INCREASE HAS NOT BEEN USED IN THE ANCHOR ANALYSIS FOR THIS SYSTEM.
5. WHERE DISSIMILAR MATERIALS OF ANY TYPE (LOUVER SYSTEM, ANCHORAGE, OR SUBSTRATE) COME IN CONTACT, THE MATERIALS MUST BE PROPERLY COATED OR OTHERWISE PROTECTED AS REQUIRED IN THE FLORIDA BUILDING CODE TO PREVENT GALVANIC REACTIONS. SPECIAL CARE SHALL BE TAKEN TO PROTECT ALUMINUM LOUVERS FROM PRESSURE TREATED LUMBER, AND ALL FASTENERS SHALL BE SELECTED WITH PROPER COATING OR MATERIAL TYPES TO PREVENT REACTIONS WITH LOUVERS OR SUBSTRATES.
6. MINIMUM LOUVER WIDTH IS 12"
7. LOUVERS MAY BE USED IN THE CONFIGURATIONS SHOWN IN THIS DRAWING, INCLUDING BUT NOT LIMITED TO SINGLE UNIT, DOUBLE WIDE MULLED OR TRIPLE WIDE MULLED, OR VERTICAL STACK OF UNLIMITED QUANTITY
8. THE MAXIMUM DESIGN PRESSURE OF THIS LOUVER SYSTEM IS +/- 150.0 P.S.F.



SINGLE SECTION (72x72 Max. *Mill Finish)
 ELEVATION



MULTI- SECTION HEIGHTS
 (72"W x Unlimited Ht.)

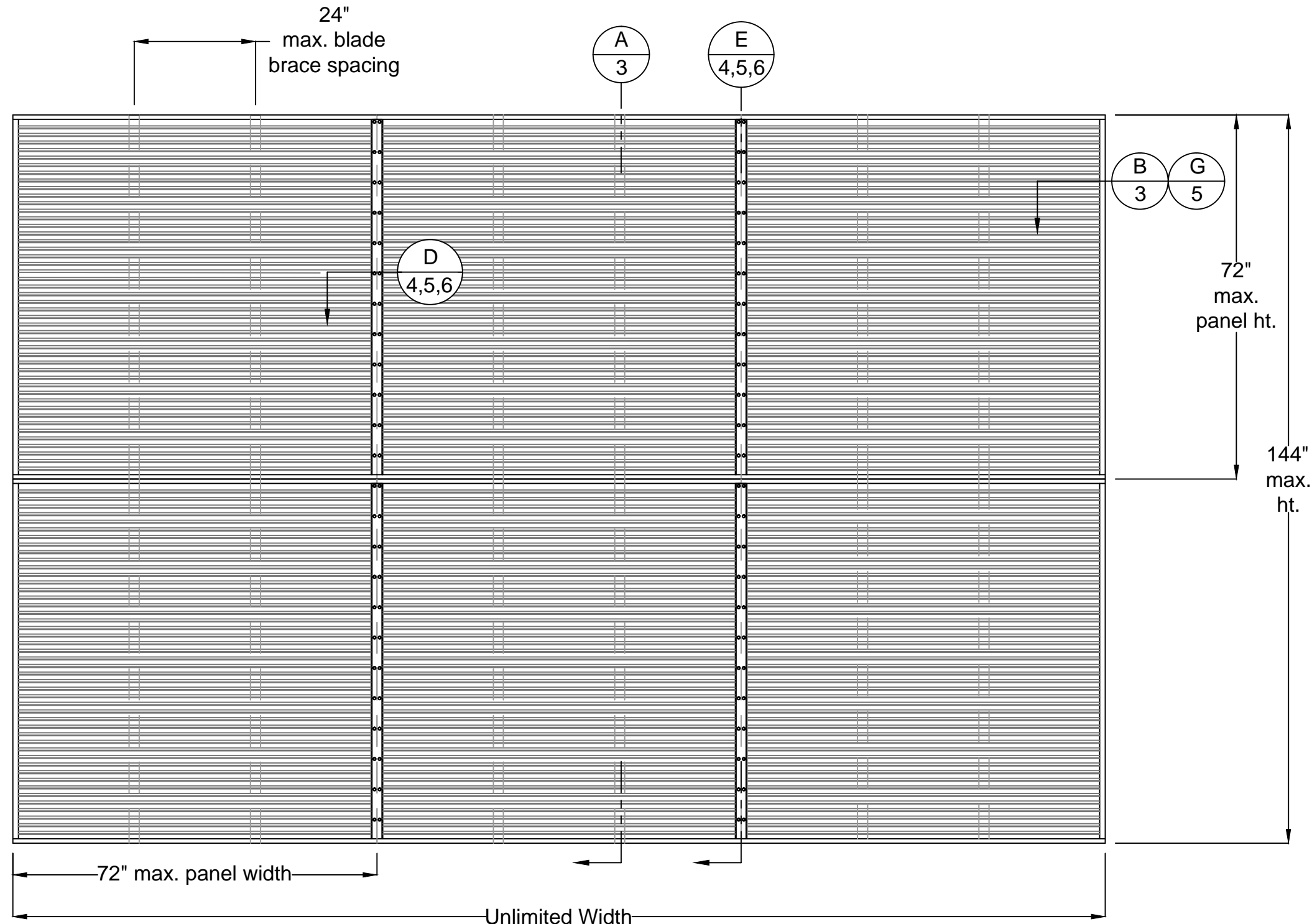


LT
 4/20/2018
 Lucas A. Turner, P.E.
 FL PE #58201
 Ph. 941-380-1574
 1239 Jabara Ave.
 North Port, FL 34288

Date: 3-21-18
Drawn By: C. Jackson

3005 South Hickory St.
 Chattanooga, TN 37407

Model D-HV-6
 Design Load +/- 150 PSF)
 Test standards passed:
 ASTM E330
 AMCA 540 (missile level D)
 AMCA 550



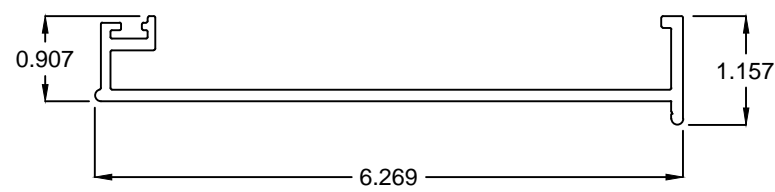
MULTI-SECTION
 ELEVATION



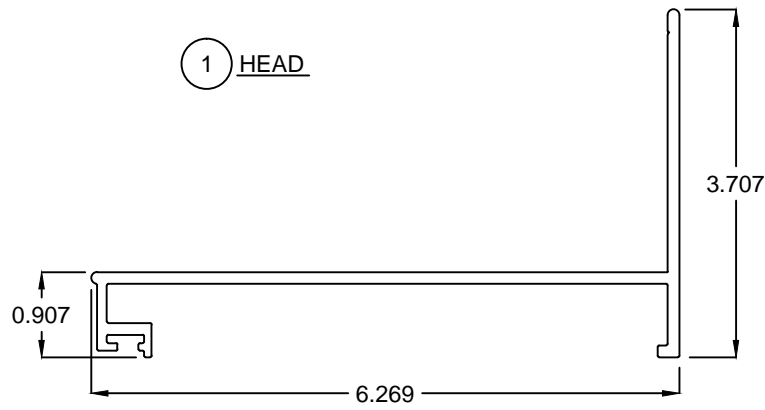
LT
 4/20/2018
 Lucas A. Turner, P.E.
 FL PE #58201
 Ph. 941-380-1574
 1239 Jabara Ave.
 North Port, FL 34288

Date: 3-21-18
Drawn By: C. Jackson

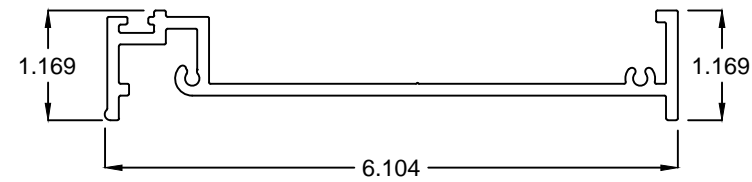
3005 South Hickory St.
 Chattanooga, TN 37407



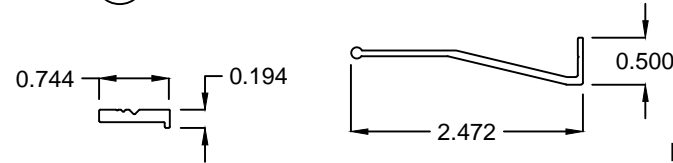
1 HEAD



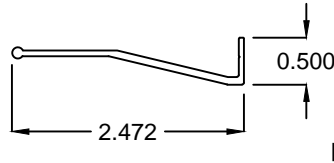
2 SILL



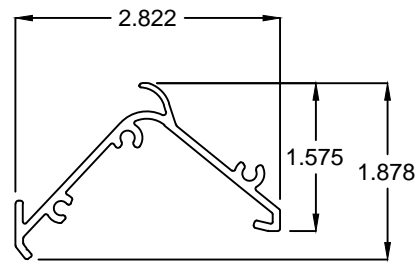
3 SIDE JAMB



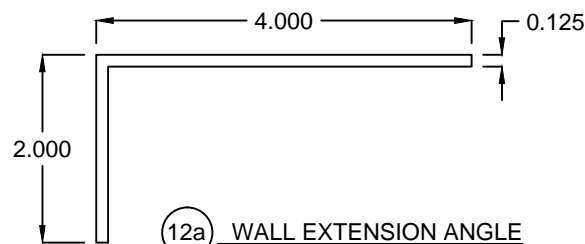
4 BIRD SCREEN FRAME



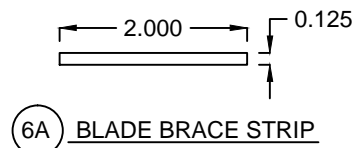
6 BLADE BRACE



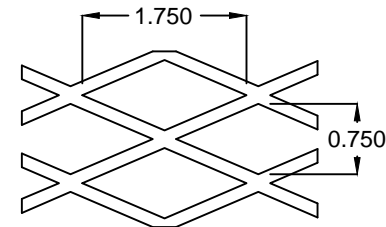
5 BLADE (Horizontal & Vertical)



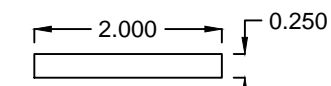
12a WALL EXTENSION ANGLE



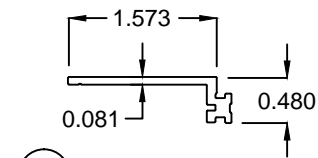
6A BLADE BRACE STRIP



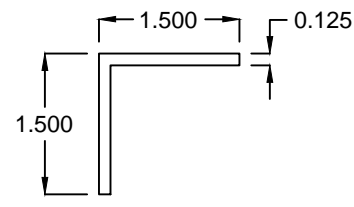
7 STD. BIRD SCREEN



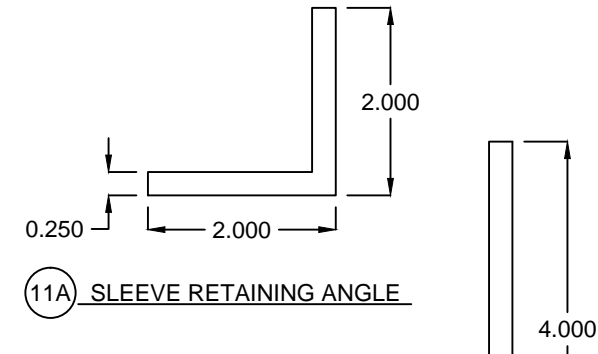
8 MULLION STRIP



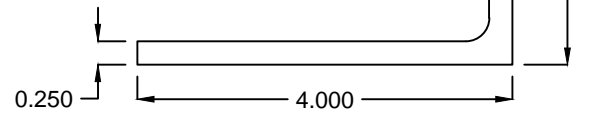
9 FLANGE



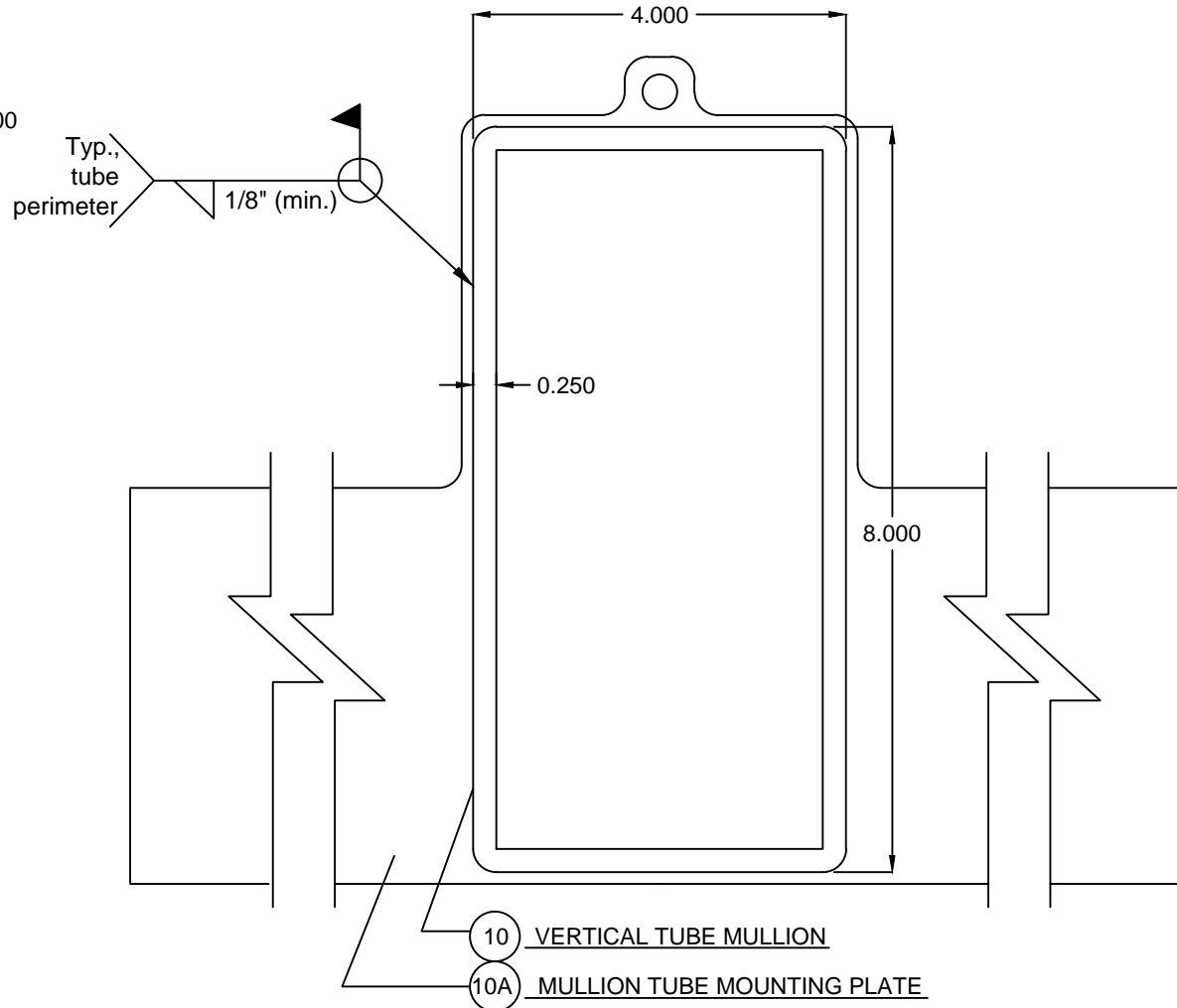
11 JAMB MOUNTING ANGLE



11A SLEEVE RETAINING ANGLE

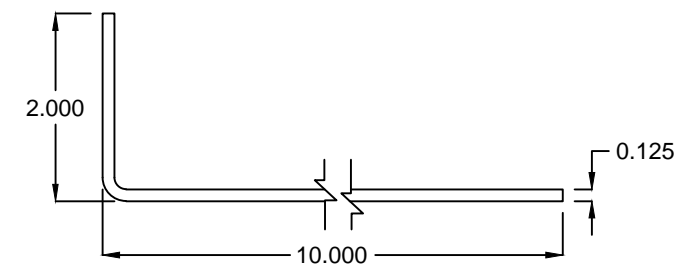


12 WALL EXTENSION ANGLE

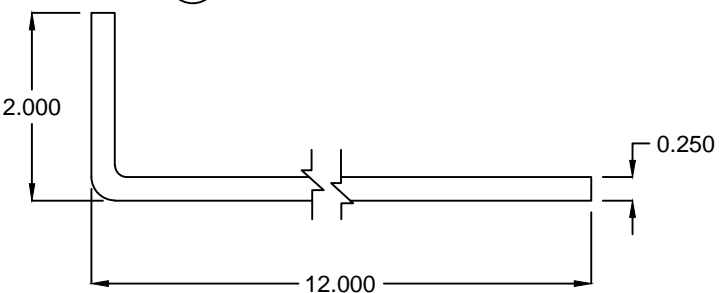


10 VERTICAL TUBE MULLION

10A MULLION TUBE MOUNTING PLATE



11B SLEEVE (single sections only)



11C SLEEVE (multi-sections only)

BILL OF MATERIALS		
ITEM #	DESCRIPTION	NOTES
1	HEAD	6063-T5 ALUM.
2	SILL	6063-T5 ALUM.
3	SIDE JAMB	6063-T5 ALUM.
4	BIRD SCREEN FRAME	6063-T5 ALUM.
5	BLADE	6063-T5 ALUM.
6	BLADE BRACE	6063-T5 ALUM.
6A	BLADE BRACE STRIP	6063-T5 ALUM.
7	STANDARD BIRD SCREEN	3/4" X .051" FLATTENED ALUM.
8	MULLION STRIP (VERTICAL MULLIONS)	6063-T5 ALUM.
9	FLANGE (OPTIONAL)	6063-T5 ALUM.
10	VERTICAL TUBE MULLION	ASTM A500 GRADE B STEEL
10A	MULLION TUBE MOUNTING PLATE	1/4" ASTM A36 STEEL
11	JAMB MOUNTING ANGLE	6063-T5 ALUM.
11A	SLEEVE RETAINING ANGLE	6063-T5 ALUM.
11B	SLEEVE (Single Section Louvers only)	3000 SERIES FORMED ALUM.
11C	SLEEVE (Multi-section Louvers only)	3000 SERIES FORMED ALUM.
12	WALL EXTENSION ANGLE	1/4" ASTM A36 STEEL
12A	TUBE ATTACHMENT ANGLE	6063-T5 ALUM.
13	#8 X 1" HEX HEAD, ZINC PLATED S.M.S.	LOUVER ASSEMBLY
14	#14 X 1-1/2" HEX HEAD, ZINC PLATED TEK SCREW	ANGLE CLIP ATTACHMENT TO LOUVER, MULLION STRIP
15	#10 X 3/4" PAN HEAD ZINC PLATED TEK SCREW	BLADE BRACE ATTACHMENT



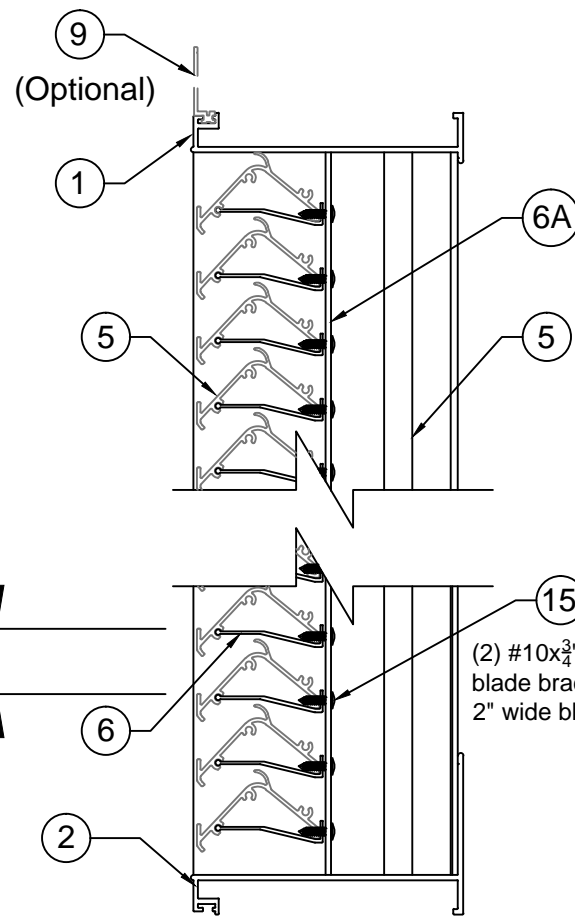
LT

4/20/2018
 Lucas A. Turner, P.E.
 FL PE #58201
 Ph. 941-380-1574
 1239 Jabara Ave.
 North Port, FL 34288

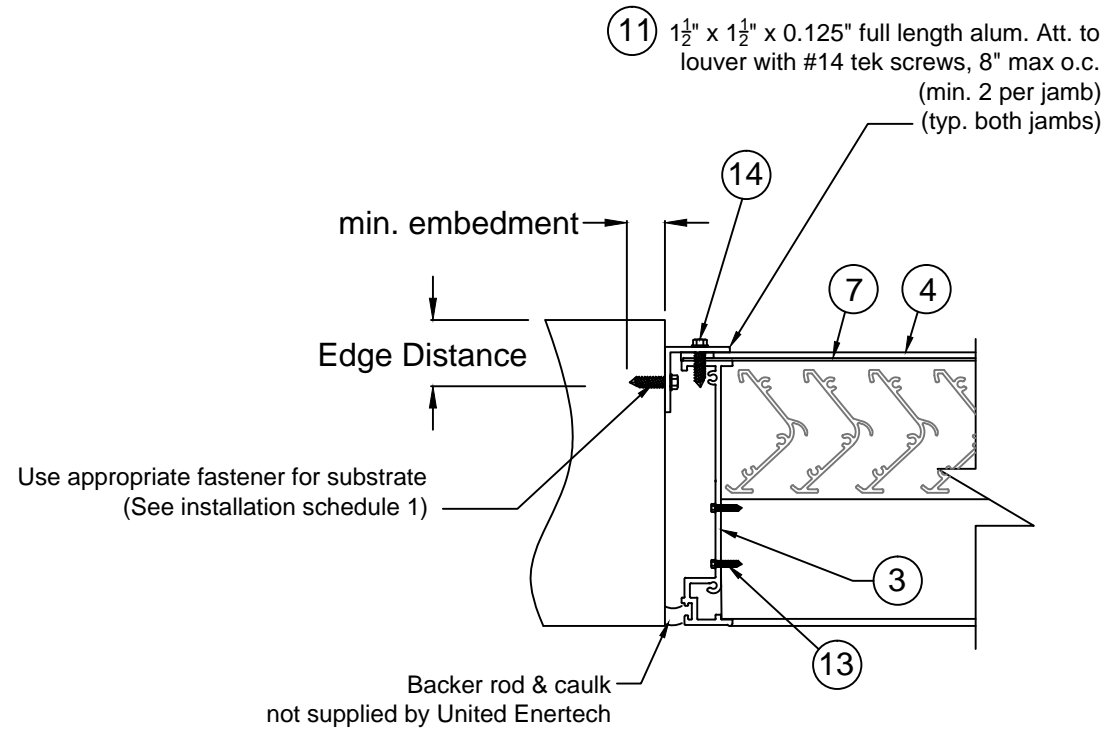


3005 South Hickory St.
 Chattanooga, TN 37407

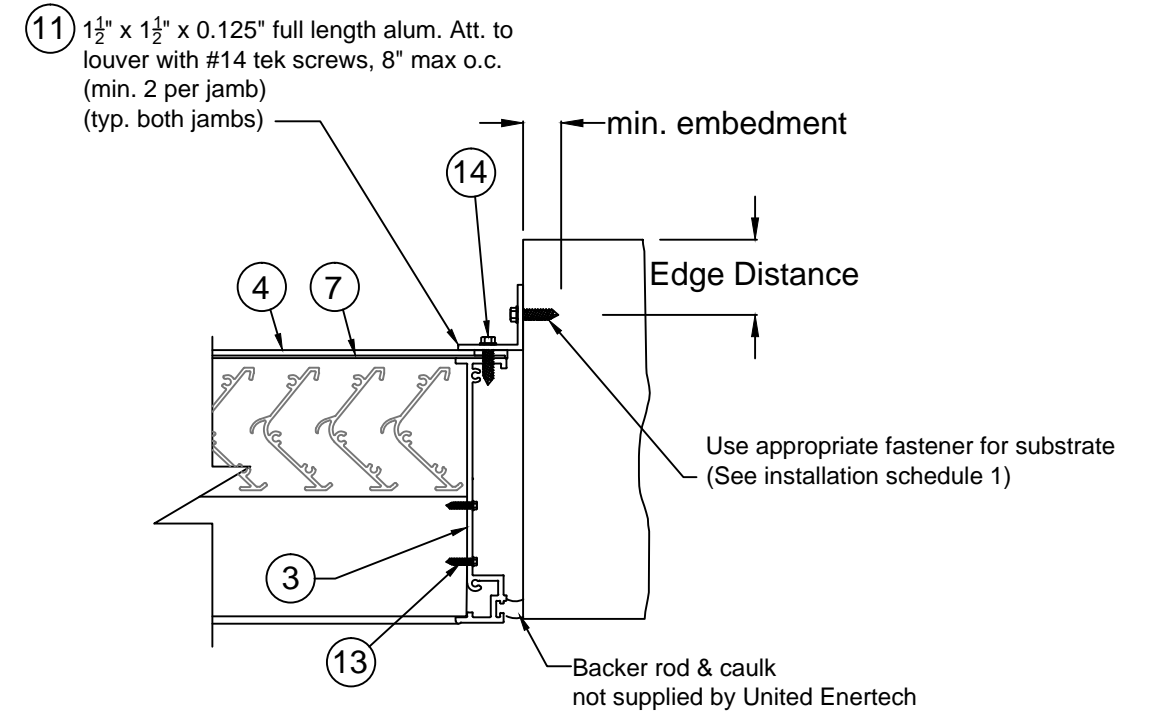
Date: 3-21-17
 Drawn By: C. Jackson



Detail "A"
Blade brace detail



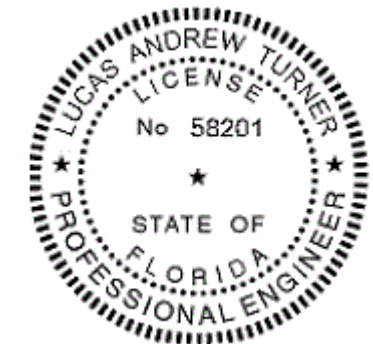
Detail "B"
Alternate Jamb Attachment



Detail "B"
Jamb Attachment

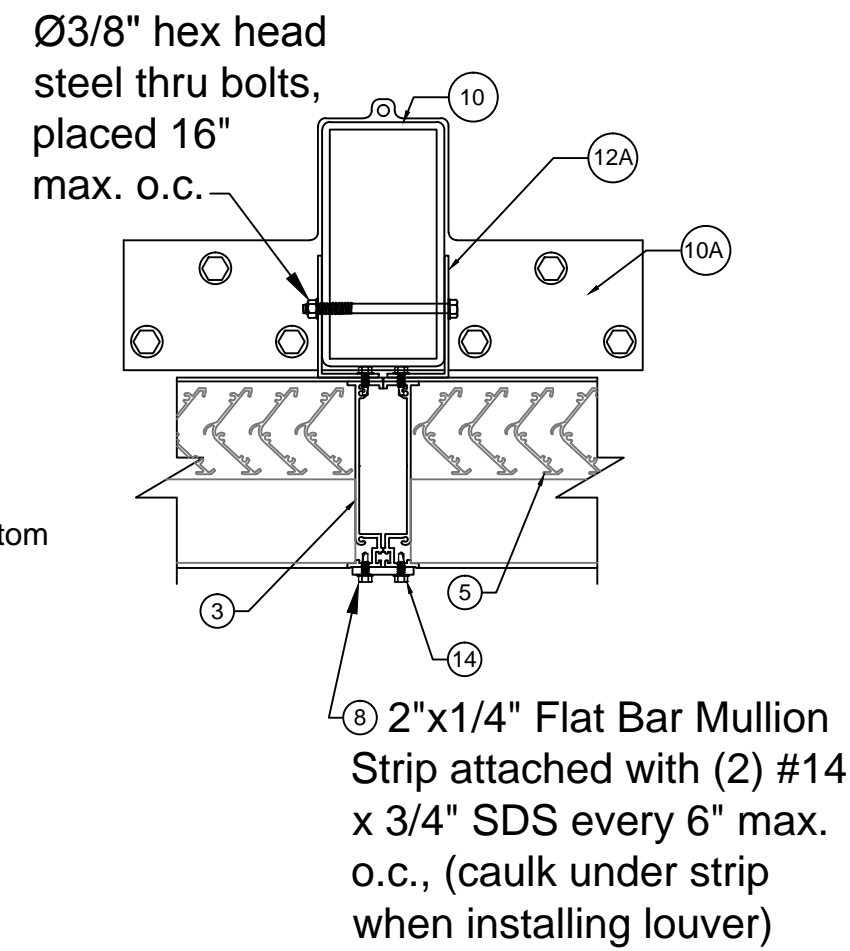
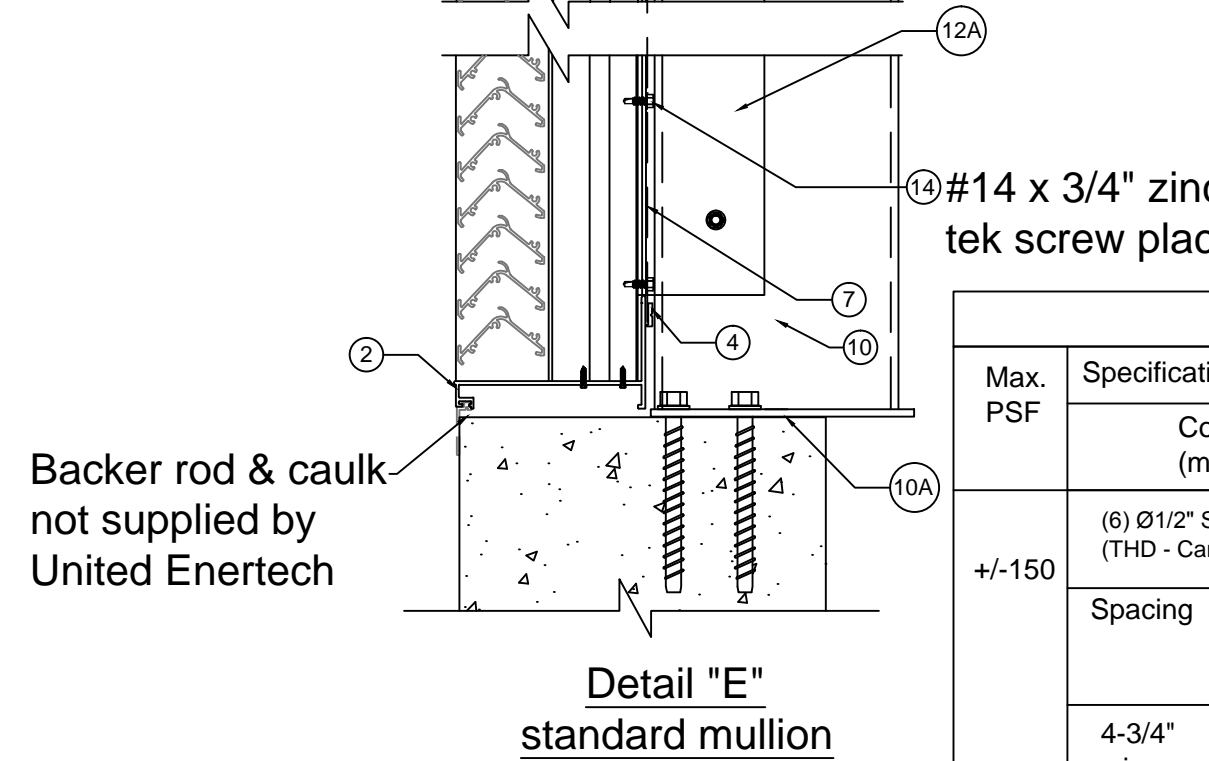
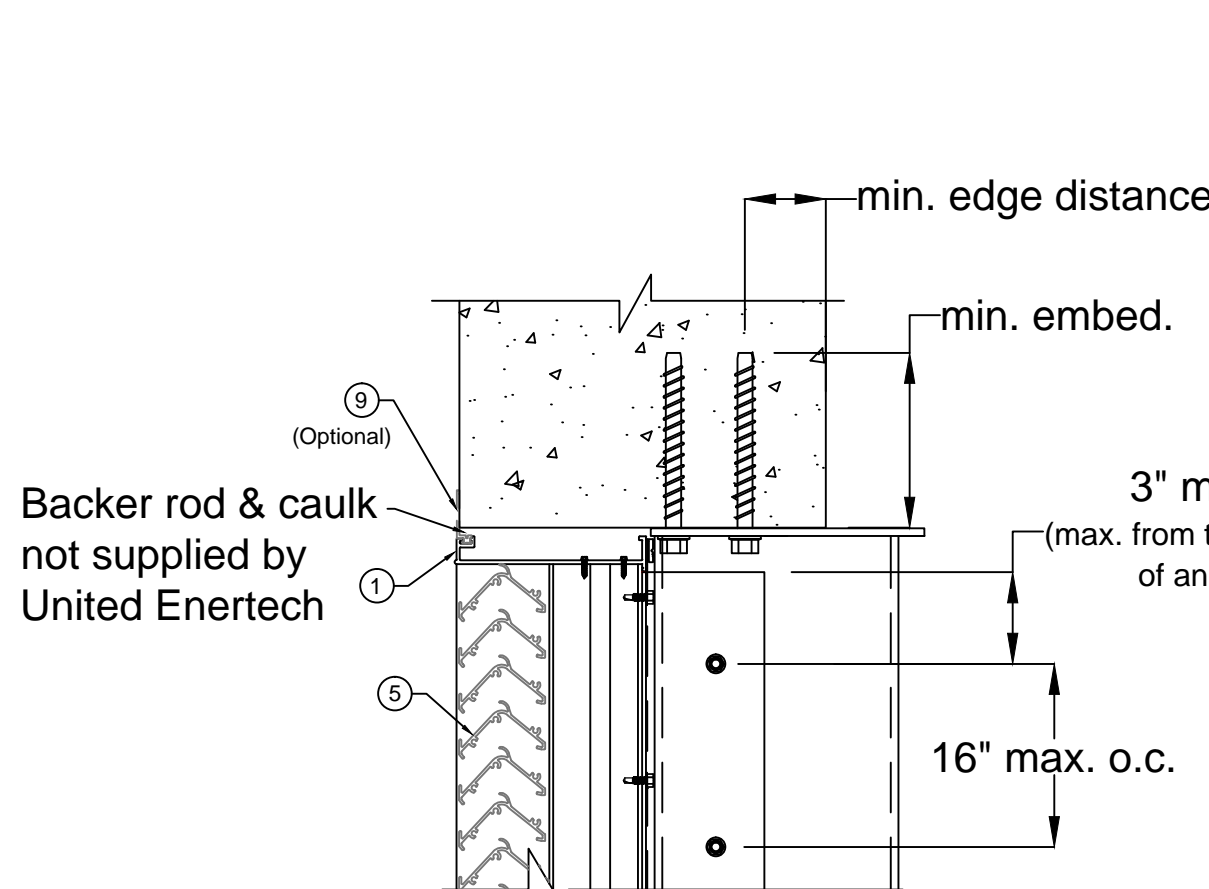
INSTALLATION SCHEDULE 1									
Max. PSF	Specification according to substrate (jamb angle attachment)								
	Concrete (min. 3000 PSI)			Steel (10 ga min.) (Fy=36 ksi)			Wood (G=0.55 density)		
+/-150	Ø1/4" Tapcons			Ø1/4"-Tek screws			Ø1/4" Lag Screws		
	Spacing	Min. Embed.	Min. Edge Distance	Spacing	Min. Embed.	Min. Edge Distance	Spacing	Min. Embed.	Min. Edge Distance
	5" o.c.	1-3/4"	3"	4" o.c.	N/A	1"	6" o.c.	1-1/2"	2"

All fasteners are placed 3" min. from head and sill of louver



LT
4/20/2018
Lucas A. Turner, P.E.
FL PE #58201
Ph. 941-380-1574
1239 Jabara Ave.
North Port, FL 34288

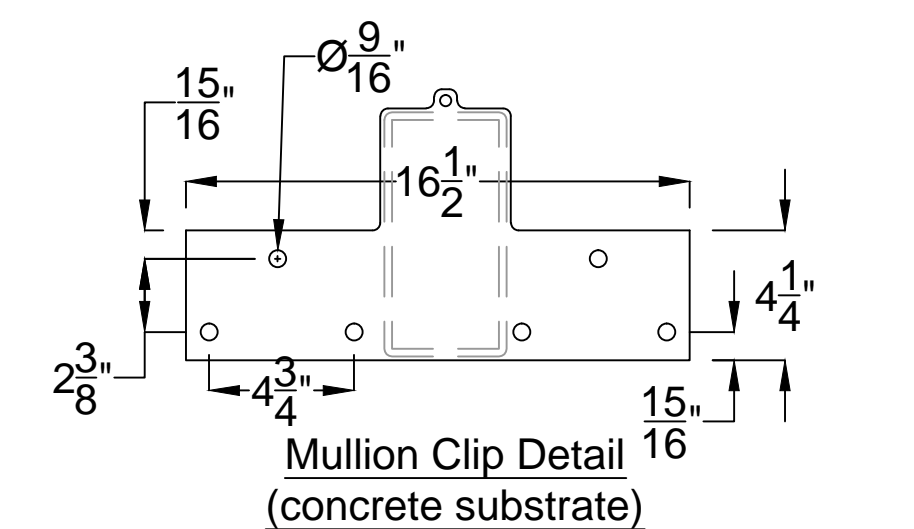
Date: 3-21-18		 3005 South Hickory St. Chattanooga, TN 37407
Drawn By: C. Jackson		
Model D-HV-6 sheet 3 of 7		



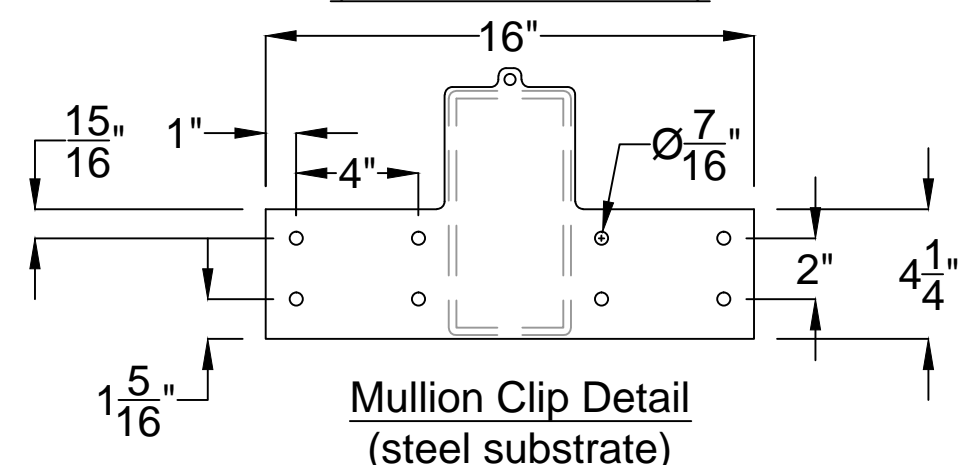
Detail "D"
standard mullion

#14 x 3/4" zinc plated steel tek screw placed 6" o.c.

INSTALLATION SCHEDULE 2						
Max. PSF	Specification according to substrate (Mullion clip plates, Head/Sill)					
	Concrete (min. 3000 PSI)			Steel (10 ga min.) (Fy=36 ksi)		
+/-150	(6) Ø1/2" Simpson Strong-Tie Titen HD (THD - Carbon Steel) per plate			(8) Ø3/8"-16 Machine Screws		
	Spacing	Min. Embed.	Min. Edge Distance	Spacing	Min. Embed.	Min. Edge Distance
	4-3/4" min. o.c.	5.75"	3"	4" o.c.	N/A	1"



Mullion Clip Detail
(concrete substrate)



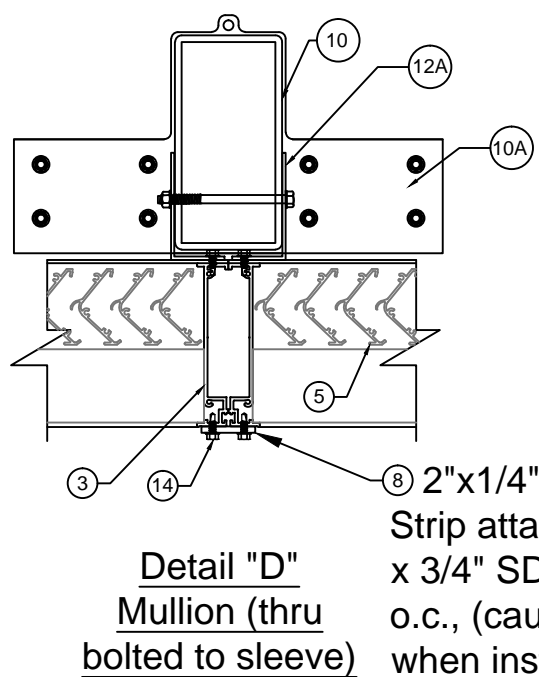
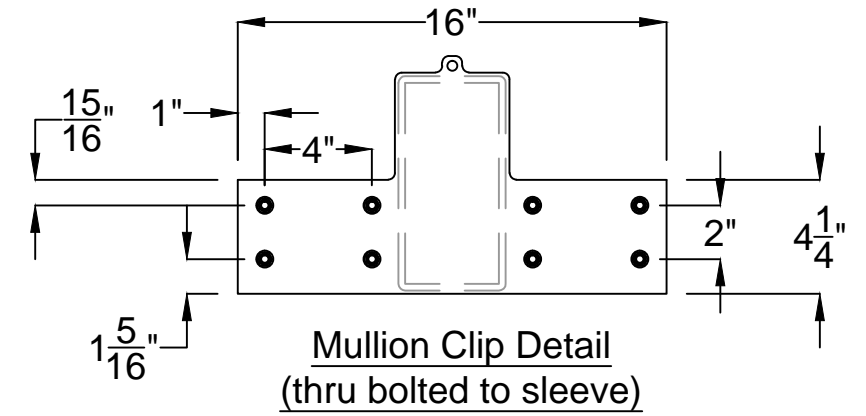
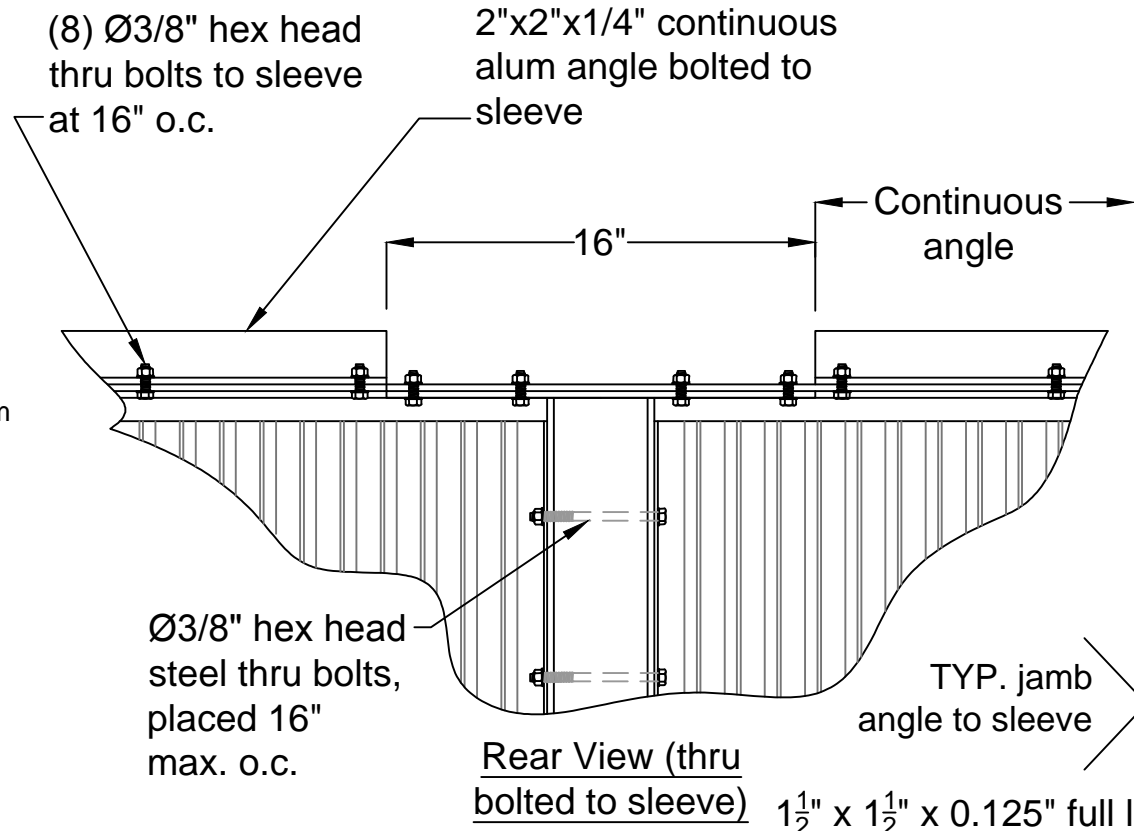
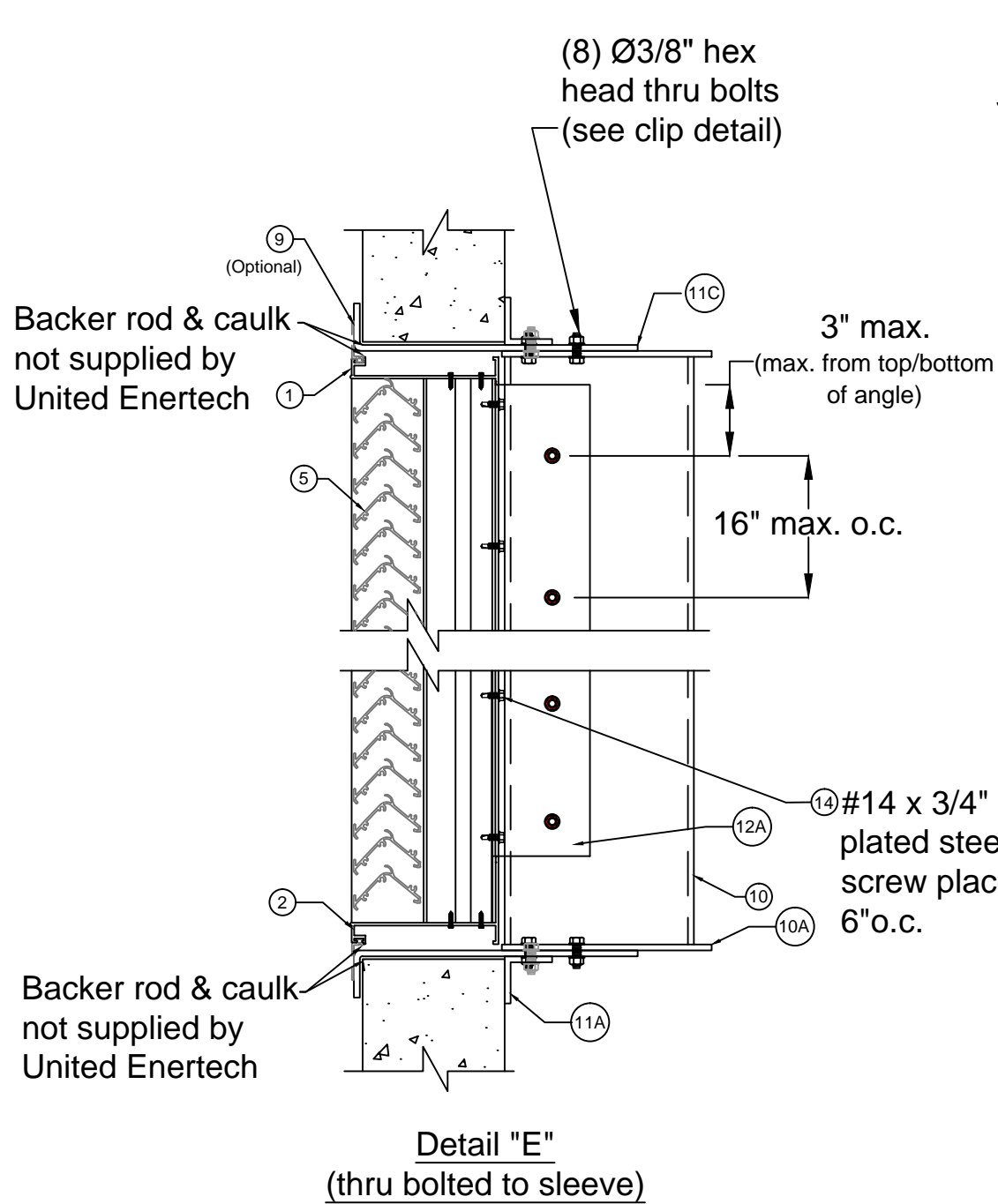
Mullion Clip Detail
(steel substrate)



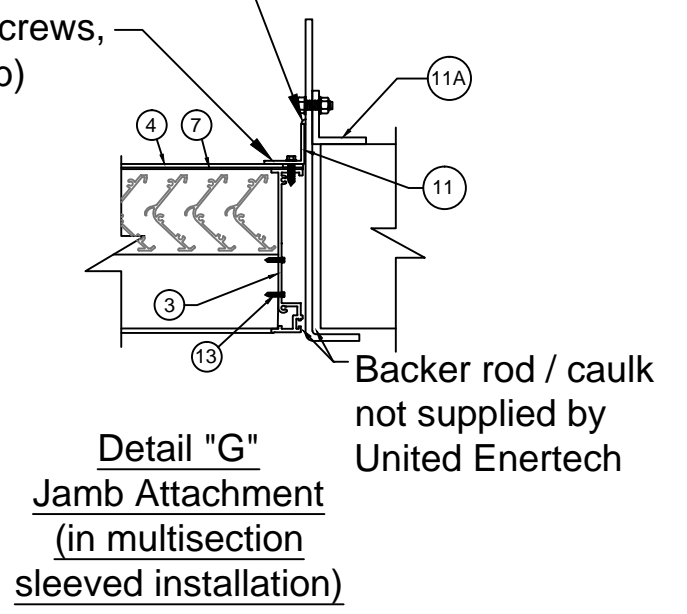
LT
4/20/2018
Lucas A. Turner, P.E.
FL PE #58201
Ph. 941-380-1574
1239 Jabara Ave.
North Port, FL 34288

Date: 3-21-18
Drawn By: C. Jackson

3005 South Hickory St.
Chattanooga, TN 37407

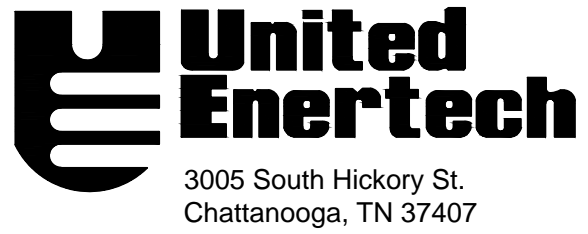


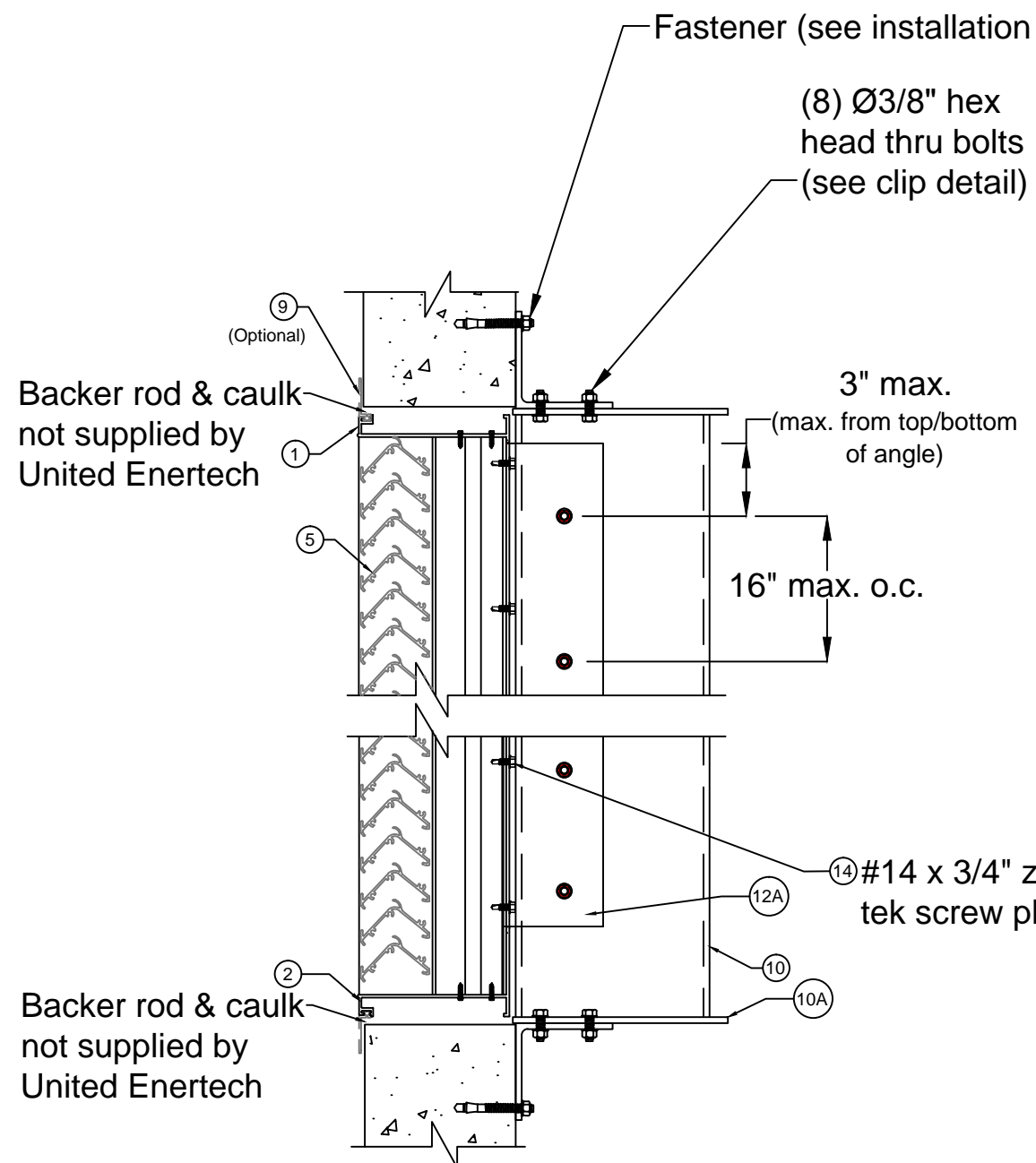
1 1/2" x 1 1/2" x 0.125" full length alum. Att. to louver with #14 tek screws, 8" max o.c. (min. 2 per jamb) (typ. both jambs)



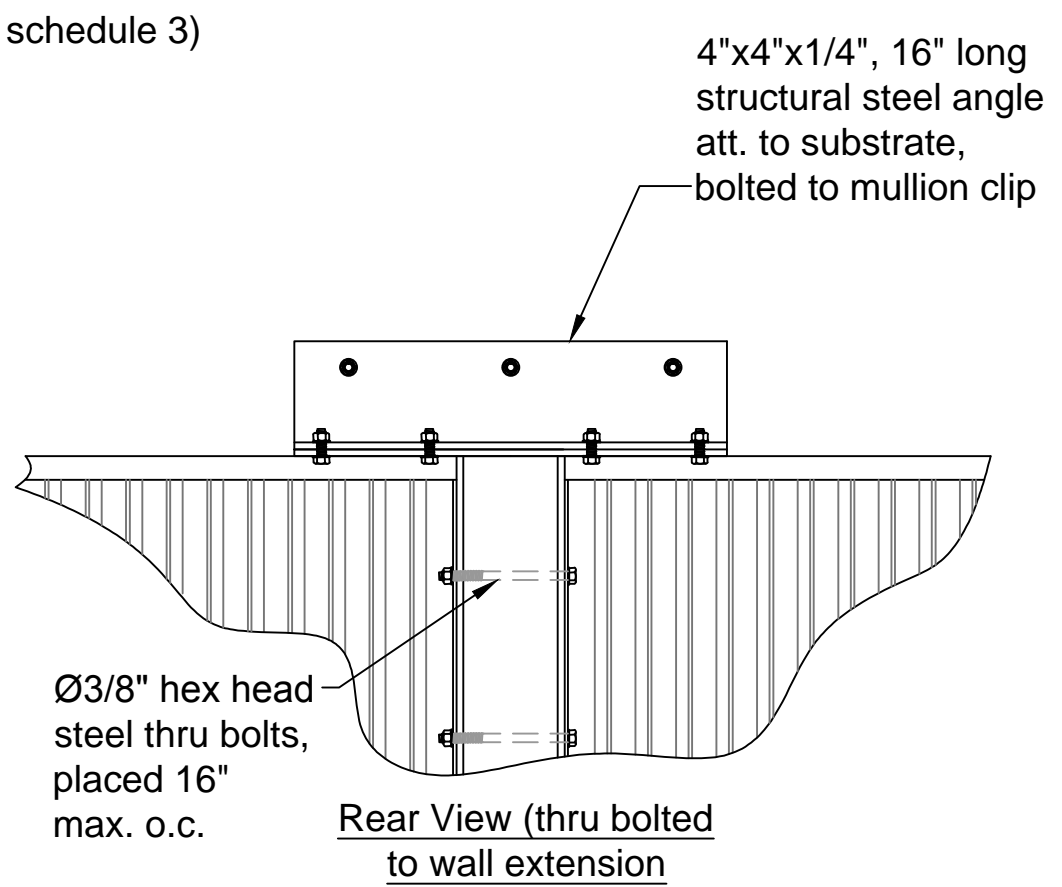
27
 4/20/2018
 Lucas A. Turner, P.E.
 FL PE #58201
 Ph. 941-380-1574
 1239 Jabara Ave.
 North Port, FL 34288

Date: 3-21-18
 Drawn By: C. Jackson

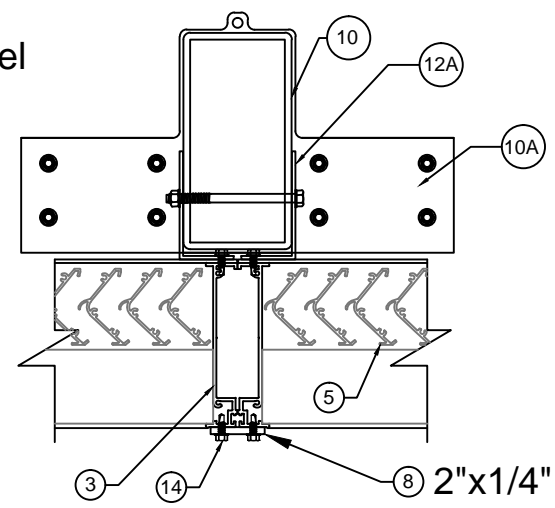




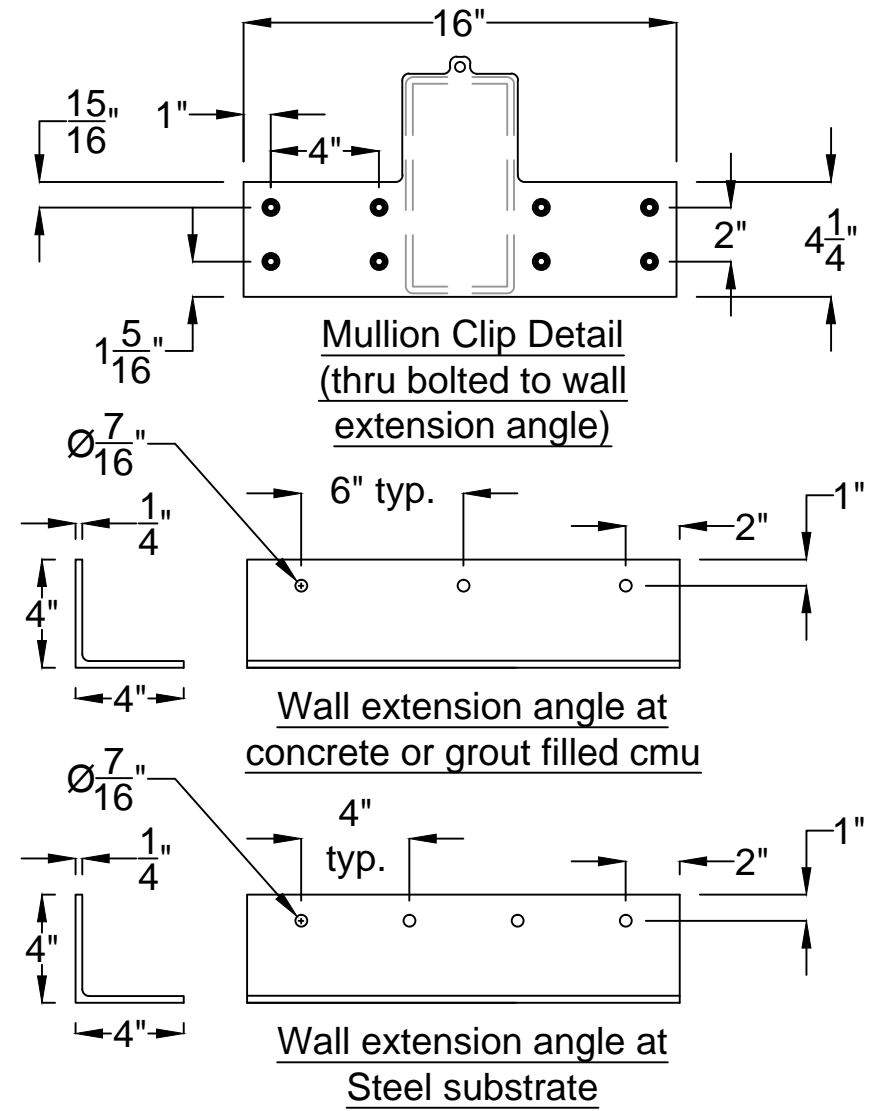
Detail "E"
(thru bolted to wall extension)



Rear View (thru bolted to wall extension)



Detail "D"
Mullion (thru bolted to wall extension)

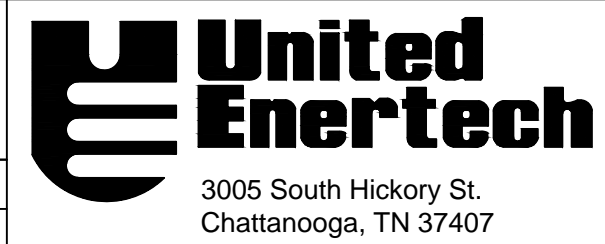


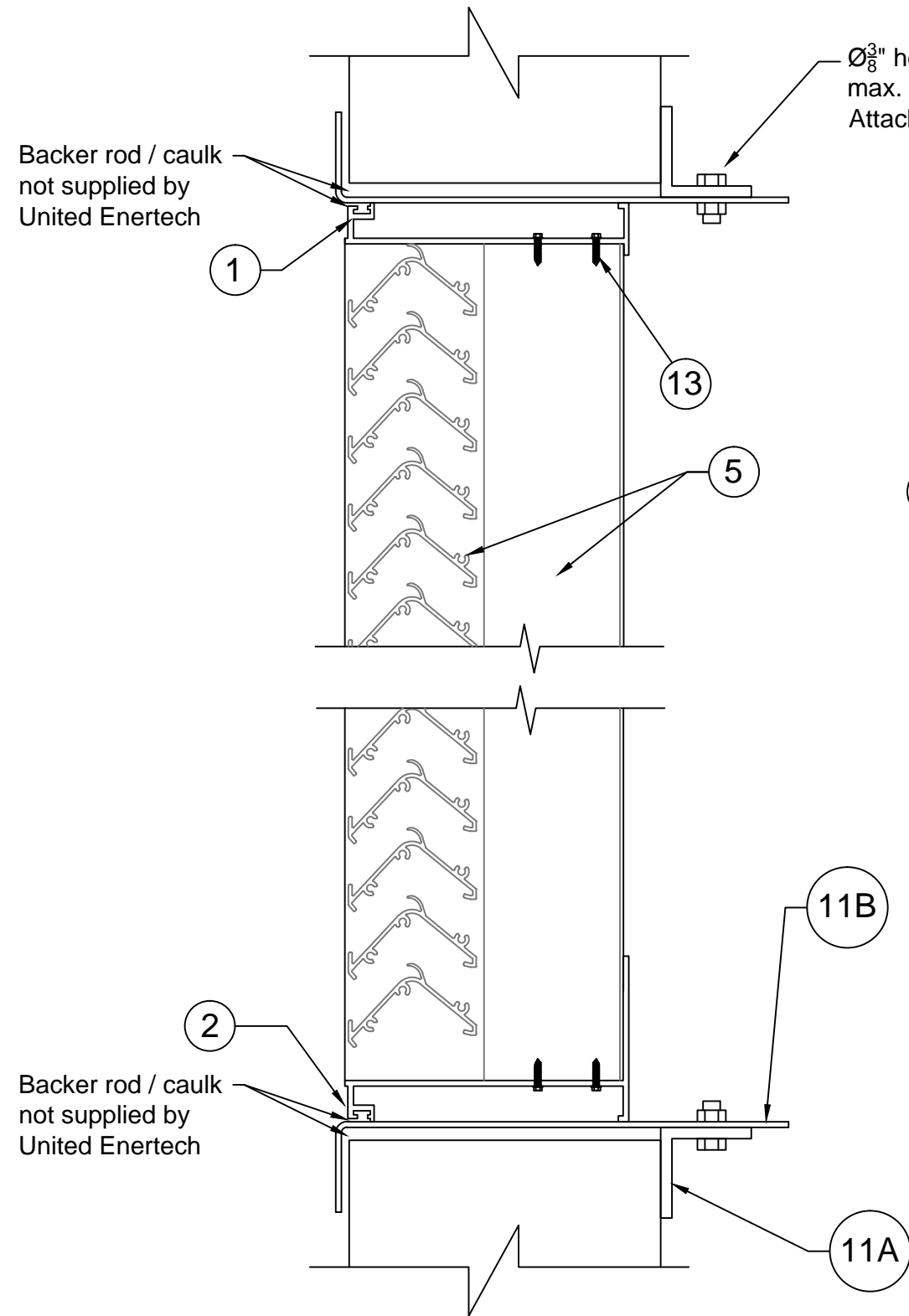
INSTALLATION SCHEDULE 3					
Max. PSF	Specification according to substrate (Wall extension angles, Head/Sill)				
	Concrete/CMU (min. 3000 PSI)			Steel (1/4" min. thk.) (Fy=36 ksi)	
+/-150	(3) Ø1/2" Simpson Strong-Tie Titen HD (THD - Carbon Steel) per plate			(4) Ø3/8"-16 Machine Screws	
	Spacing	Min. Embed.	Min. Edge Distance	Spacing	Min. Embed. / Min. Edge Distance
	6" o.c.	5.75"	3"	4" o.c.	N/A / 1"



4/20/2018
Lucas A. Turner, P.E.
FL PE #58201
Ph. 941-380-1574
1239 Jabara Ave.
North Port, FL 34288

Date: 3-21-18
Drawn By: C. Jackson



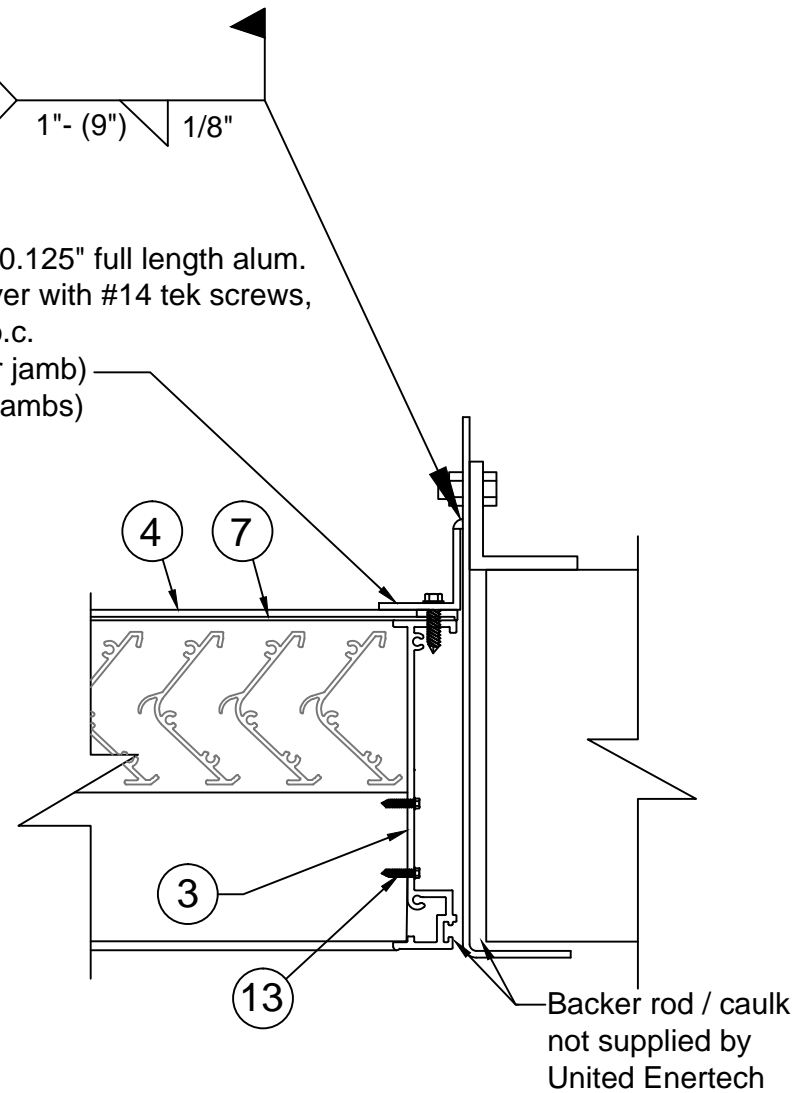


Detail "C"
Head/Sill
 (in sleeved installation)

$\text{Ø}\frac{3}{8}$ " hex head thru bolts, nuts, placed 16" max. o.c. around sleeve perimeter. Attaches sleeve to retaining angles

TYP. jamb angle to sleeve
 1" - (9") $\frac{1}{8}$ "

11 $1\frac{1}{2}$ " x $1\frac{1}{2}$ " x 0.125" full length alum. Att. to louver with #14 tek screws, 3.5" max o.c. (min. 2 per jamb) (typ. both jambs)



Detail "F"
Jamb Attachment
 (in sleeved installation)



ZZ

4/20/2018
 Lucas A. Turner, P.E.
 FL PE #58201
 Ph. 941-380-1574
 1239 Jabara Ave.
 North Port, FL 34288

Date: 3-21-18
Drawn By: C. Jackson

3005 South Hickory St.
 Chattanooga, TN 37407